



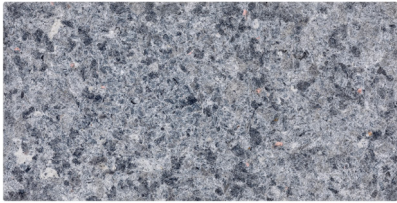
---

# ZERO BRICK

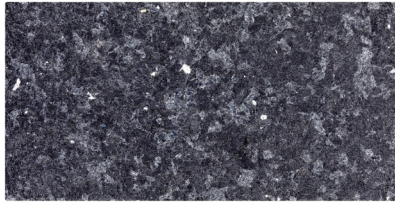
---

Product Sheet

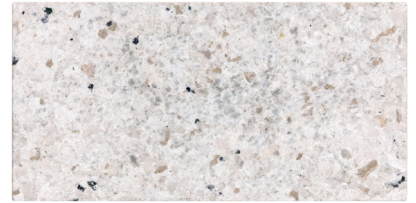
FELTOUCH



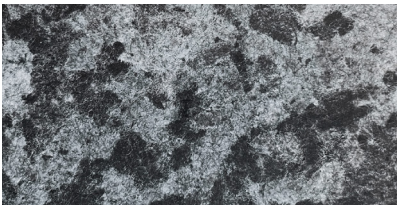
ZB02



ZB03



ZB06



ZB0203



ZB0306



ZBM

## PRODUCT DETAILS

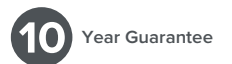
**Composition**  
100% recycle Feltouch Leftovers

**Raw Material Weight**  
6600g/m<sup>2</sup> (+/- 5 %)



Code	Dimensions (mm)	Installation	Product Weight
ZB02	W: 150 L: 300 T: 11	Cladding	0,30 kg / per pcs. (+/-5 %)
ZB03	W: 150 L: 300 T: 11	Cladding	0,30 kg / per pcs. (+/-5 %)
ZB06	W: 150 L: 300 T: 11	Cladding	0,30 kg / per pcs. (+/-5 %)
ZB0203	W: 150 L: 300 T: 11	Cladding	0,30 kg / per pcs. (+/-5 %)
ZB0306	W: 150 L: 300 T: 11	Cladding	0,30 kg / per pcs. (+/-5 %)
ZBM	W: 150 L: 300 T: 11	Cladding	0,30 kg / per pcs. (+/-5 %)

W: Width L: Length T: Thickness



## PRODUCT CERTIFICATES

### Acoustic Certificates

ASTM C423 (US Standard)  
EN ISO 354 (EU Standard)

Certificate of Product Conformity  
EN 60598 (Lighting)

Certificate of Product Conformity  
EU 305/2011

Abrasion  
EN ISO 12947 / Result Performance 'A'

Declare  
Declare CdpH Standard method v1.2-2017 /  
Result '10 + Years' (LEED v4)

Moisture Resistance  
EN 13964 2014 / Result 'Class B'

Classification of Reaction to Fire  
EN 13501 / Result 'B-s1,d0'  
EN ISO/IEC 17025 / Result 'Class A'

The Quality Management System  
ISO 9001:2015

The Environmental Management System  
ISO 14001:2015

UV Exposure Testing  
ISO 4892-3:2016 / Result '5-4'

Bleach Cleanable  
ISO 105E03 / Result '5-4'

Environmental Labels and Declarations  
ISO 14025-2010: Labels / Result 'TIP III'

Ekoteks  
ISO 1833 / Result '100% Polyester'  
Fibre Composition

ISO 9237:1995 / Result '387.9 1/m<sup>2</sup>/sn'  
Air Permeability

ISO 4920:2012 / Result 'ISO 0'  
Spray Test

ISO 14419:2010 / Result '0 D'  
Oil Repellency

ISO 105 B02:1994 / Result '6+'  
Light Fastness Grade

SNV 195 651:1968 / Result '1'  
Sensoric Odour

ISO 14184-1:2011 Low VOC / Result 'N.D'  
Formaldehyde-Free

ISO 20743:2013 / Result 'Strong Efficacy'  
%99.9 Antibacterial structure

Superior thermal insulating 0,040 W/mK

MAS Certified Green  
CDPH Standard Method v1.2, Eligible for LEED v4

Material Safety

# Declare.

## 6 MM / 12 MM ACOUSTIC PET FELT FELTOUCH

**Final Assembly:** Duzce, Turkey  
**Life Expectancy:** 10+ Year(s)  
**End of Life Options:** Salvageable/Reusable in its Entirety, Take Back Program (Zeroburn.org), Recyclable (100%)  
**EU CoC Screened:** Does Not Contain

### Ingredients:

**Recycled PET Fibers:** Polyethylene Terephthalate; **Virgin Polyester Fibers:** Polyethylene Terephthalate

**Living Building Challenge Criteria:** Compliant

### I-13 Red List:

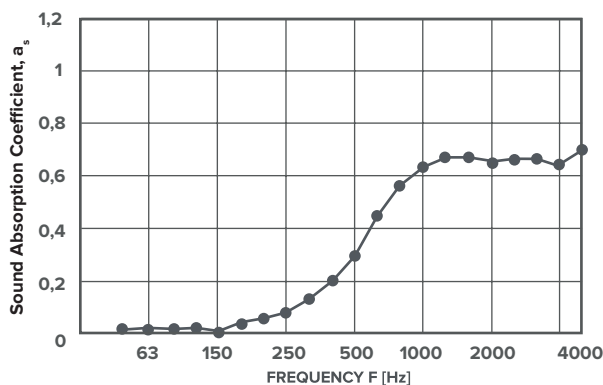
LBC Red List Free      % Disclosed: 100% at 100ppm  
 LBC Red List Approved      VOC Content: Not Applicable  
 Declared

**I-10 Interior Performance:** CDPH Standard Method v1.2-2017  
**I-14 Responsible Sourcing:** Not Applicable

FEL-0001  
EXP: 01 JUN 2023  
SCREENED: 25 MAY 2022  
Original Issue Date: 2022

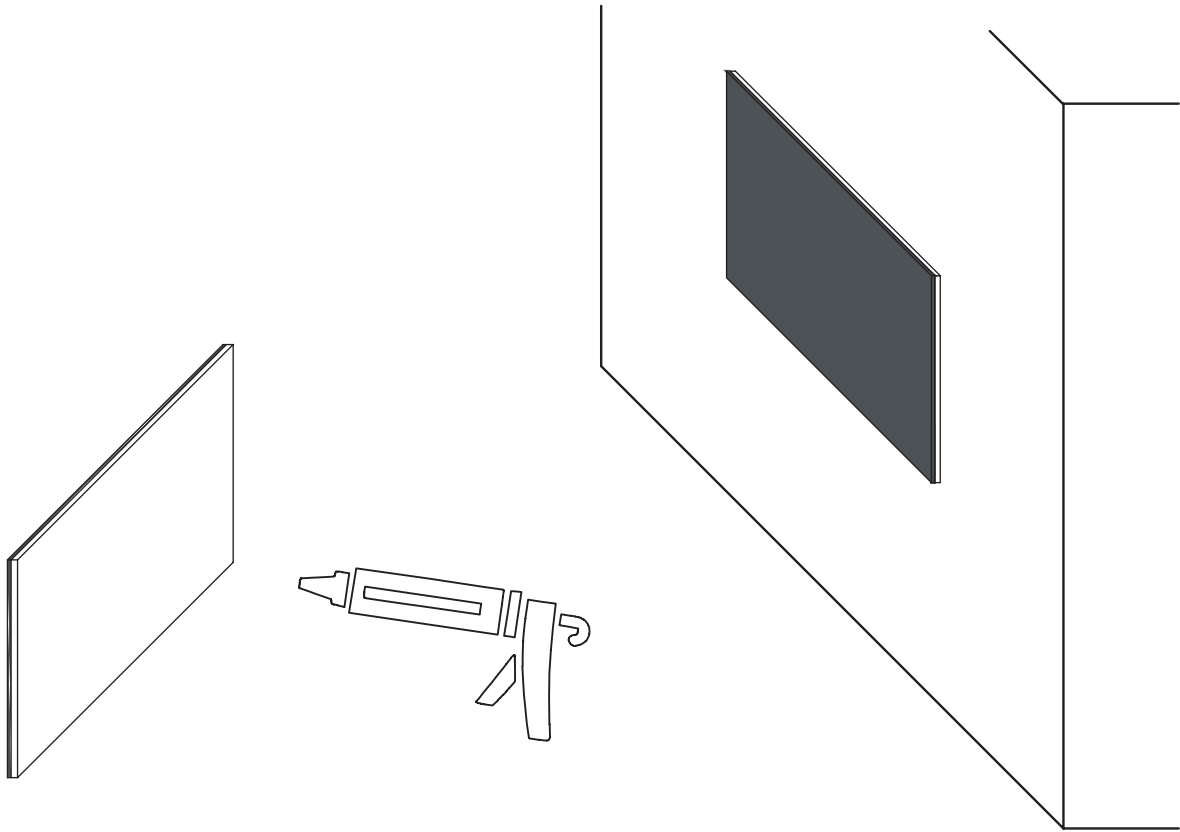
MANUFACTURER RESPONSIBLE FOR LABEL ACCURACY  
INTERNATIONAL LIVING FUTURE INSTITUTE™ [living-future.org/declare](http://living-future.org/declare)

## PRODUCT ACOUSTIC RESULTS



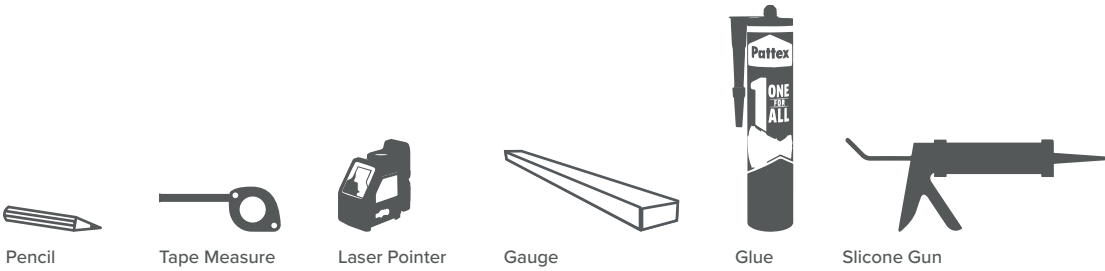
Rating according to ISO 11654:	
Weighted sound absorption coefficient	
$\alpha_w$	0.35
NRC	0.4
Sound absorption class:	D

## PRODUCT INSTALLATION



---

## PRODUCT REQUIRED TOOLS



## ABOUT PET FELT

- PET Felt is 100% polyester material %50 recycled from Pet Bottles.
- The material is produced with nonwoven technology without any chemical application from the production process to the end user.
- Thanks to its recycled content from the pet bottle, it does not contain more than 0.02% of the ambient moisture. Therefore, it also has an anti-bacterial and partially anti-allergic structure and is naturally hydrophobic. In this way, oil and water repellent, sun-proof, can be used in humid areas can be used in all indoor spaces.
- PET Felt is easy to clean and maintain.

## MAINTENANCE & CEILING INSTRUCTIONS

- Indoor use only
- Cleaning methods:



Wipe clean with a damp cloth



Vacuum regularly



Bleach cleanable (only natural colors)

- If a wet spill occurs,
  - Dry the liquid with a dry cloth as soon as possible to prevent absorption.
  - To remove stains, copious amounts of water can be applied to the surface with a cloth without rubbing. Generally, water is sufficient to remove light stains.
  - If the stain does not come off with water, a mild detergent may be used. Avoid from the hard detergents.
  - If the product is portable and small enough, it is best to take the services of a professional dry cleaning company.
  - Lastly, dry it with a dry towel while still wet.
- If a stubborn stains occurs,
  - Collect the stain with a dry cloth as soon as possible to prevent absorption.
  - To remove stains, firstly apply copious amounts of water to the surface with a cloth without rubbing.
  - If the stain does not come off with water, a mild detergent should be used. Avoid from the hard detergents.
  - If the product is portable and small enough, it is best to take the services of a professional dry cleaning company after the first intervention
  - Lastly, dry it with a dry towel while still wet.
- During cleaning process, avoid excessive friction and rubbing as it can continue the felting process and change the appearance of the felt surface.
- It is recommended that the cleaning method be tested in an inconspicuous area.



# FELTOUCH

FELTOUCH.COM

